

# HINKLEY

## 3 SPEED FAN & LIGHT WALL CONTROL WITH SMART CONTROL RECEIVER INSTALLATION INSTRUCTIONS

Model: 980017

READ AND SAVE THESE INSTRUCTIONS

### GENERAL INFORMATION

This wall control is designed to separately control your ceiling fan speed and light brightness.

- The fan button will control the fan speed. (Hi, Medium, Low)
- The light buttons will control the lights, brightness dimmer and off.
- The red indicator on the transmitter will light when the button is pressed.

**NOTE:** When installing the remote control, be sure your fan control or pull chain switch are in the "**HIGH SPEED**" position and the light control or switch is set to "**ON**".

### INSTALLATION AND OPERATING INSTRUCTIONS

**NOTE:** This unit is equipped with an automatically learned type remote control. There are no frequency switches on the receiver and transmitter; the receiver unit will automatically scan the frequency from the handheld remote if any changes are made. This unit has 65,000 different code combinations.

#### 1. INSTALLING RECEIVER IN THE CEILING FAN

##### A. Safety precautions:

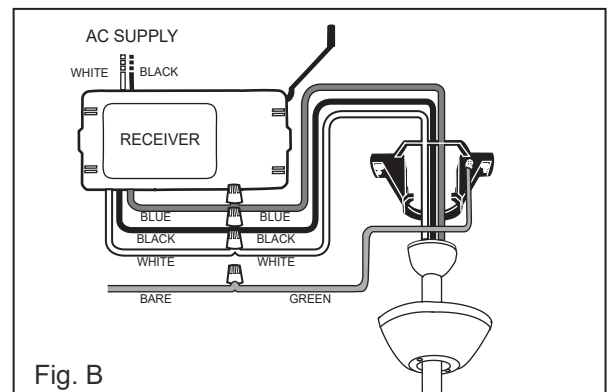
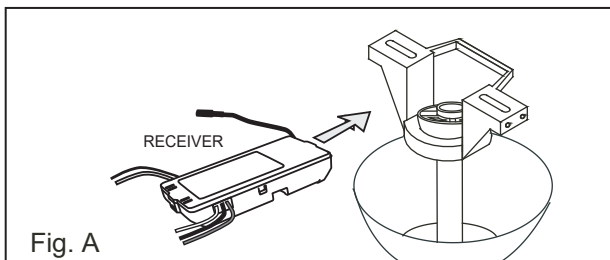
**WARNING: HIGH VOLTAGE!** Household electrical power can cause serious injury or death. Disconnect the source of electrical power to the ceiling fan by removing the fuse or switching off the circuit breaker.

##### B. Installing receiver in fan.:

- Remove the ceiling fan canopy from the mounting bracket.
- Disconnect the existing wiring between the ceiling fan and supply at the electrical junction box.
- Lay the black antenna wire on top of the receiver, and put the receiver in the mounting bracket. (Fig. A)
- Make the connections as follows, using the wire nuts supplied: (Fig. B)

#### CONNECT TO

Green fan wire.....	Bare supply wire
Black receiver wire (AC IN L).....	Black supply wire
White receiver wire (AC IN N).....	White supply wire
White receiver wire (TO MOTOR N).....	White fan wire
Black receiver wire (TO MOTOR L).....	Black fan wire
Blue receiver wire (FOR LIGHT).....	Blue light wire



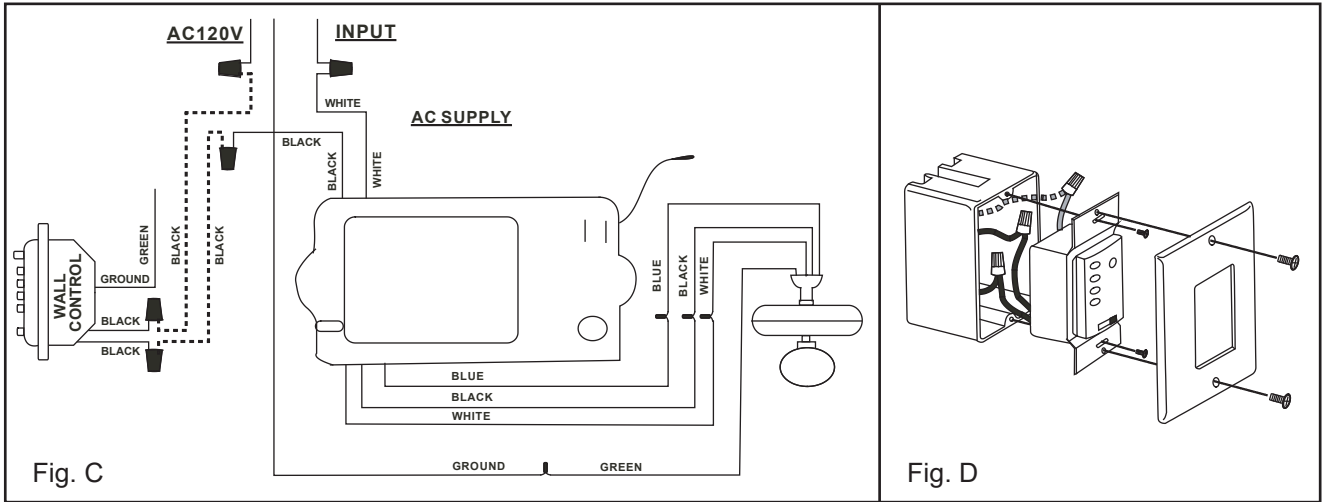
**If other fan or supply wires are different color, have this unit installed by a qualified electrician.**

- Push all connected wires up into junction box.
- Reinstall the canopy on the mounting bracket.
- Restore the electrical power.

#### 2. INSTALLING THE WALL TRANSMITTER

**WARNING! HOOK UP "IN SERIES" ONLY. DO NOT CONNECT NEUTRAL SUPPLY WIRE OF ELECTRIC CIRCUIT TO THE TRANSMITTER WALL SWITCH, DAMAGE TO THE TRANSMITTER WALL SWITCH AND POSSIBLE FIRE COULD OCCUR.**

- Remove the existing wall plate and switch from the wall outlet box.
- Make the electrical connections as shown in Fig. C. If your outlet box has a ground wire (Green or Bare Copper) connect the Transmitter's ground wire directly to one of the screws from the outlet box. Secure all wire connections with the plastic wire nuts provided.
- Carefully tuck the wire connections inside the outlet box. Use the screws provided to secure the wall transmitter and wall plate to the outlet box. (Fig. D)



### 3. OPERATING TRANSMITTER:

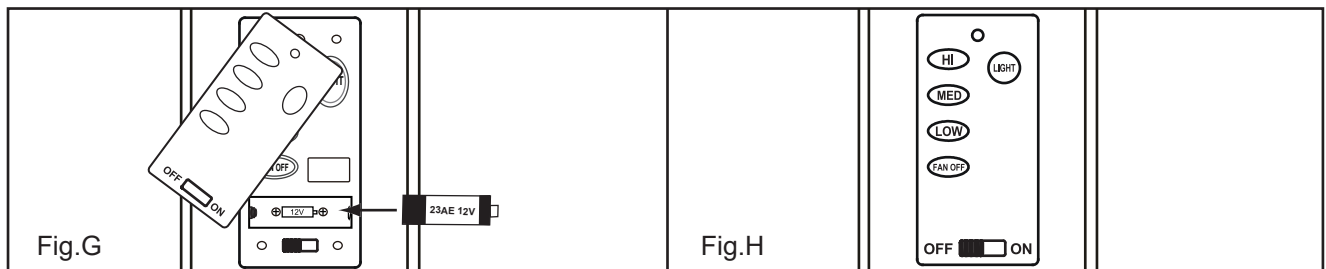
- A. Store the transmitter away from excess heat or humidity.
- B. Remove cover by snapping off from top or bottom, install 12V battery located in the wall transmitter, Duracell MN21/Eveready A23/GP 23A all 12V. (Fig. G)  
**NOTE:** To prevent damage to the transmitter, remove these batteries if not used for long periods of time (months).
- C. Operation buttons on the panel of the transmitter: (Figure G)
  - HI button - for fan high speed.
  - MED button - for fan medium speed.
  - LOW button - for fan low speed.
  - FAN OFF button - for fan speed off.
  - OFF-ON Slide Button-This button turns the power Off and On to the Fan and Light(s).

The "**LIGHT**" button: This Button will control the light brightness. The light function is controlled by pressing the "**LIGHT**" button. Hold the button down to increase or decrease the light. Tap the button quickly to turn the light off or on. If you press the button in excess of 0.7 seconds it becomes a dimmer. The light varies cyclically in 0.8 seconds. The light key has auto resume, so it will stay at the same brightness as the last time it was turned off.

### Remote pairing process:

**NOTE:** The "FAN OFF" button must be pressed within 60 seconds of restoring power.

With the fan's power off, restore power to the fan. Press and hold "FAN OFF" button for about 5 seconds and release. If optional light kit is installed, the light kit will flash twice and the signal light on the handheld remote will come on when the button is pressed. The fan has completed the pairing process with the handheld remote and is ready for use.



**YOUR REMOTE NOW HAS FULL CONTROL OF THE FAN AND LIGHT.**

### 4. TROUBLESHOOTING GUIDE

- A. **Fails to operate:**
  - a. Power to the receiver?
  - b. Receiver wired correctly?
  - c. Fan manual speed control in highest position?
  - d. Light kit switch turned on?
  - e. Code set at exact same position in both transmitter and receiver?
- B. **Won't operate at distance:**
  - If transmitter operates the fan and the light kit when up close, but not a 30 feet away, try placing the black antenna wire higher; up through the ceiling, outside the junction box.

### NOTICE!

- Your ceiling fan and light kit assembly must meet the following requirements:
1. Do not use with solid state fans.
  2. Electrical rating: 120V / 60 Hz  
 MAX. motor amps: 1.0 A  
 MAX. light watts: 250 W  
 (Incandescent only)

**For Warranty Information please visit [www.hinkley.com](http://www.hinkley.com)**

# SMART CEILING FAN WIFI REMOTE CONTROL

## INSTALLATION & OPERATING INSTRUCTIONS

### SMART PHONE install add device

#### 1. Install with WIFI APP

- A. To enjoy all the potential of your new device, you will need to download the BOND HOME app, available on the Google Play Store and Apple App Store
- B. Use the QR code presented in Figure 1 to download the app, or you can download the app using below link. <http://bondhome.io/app>.



- C. After you download the app, register new account and password.

**NOTE:** Please keep this account property, you will use this account when you connect with you smart speaker.

- D. After you Log into the main page, you will see the "+ " on the right side of top space.

- E. You will see ADD a new device screen, and choose Smart by Bond. Then you could follow the config WiFi process to continue pairing.

- F. After the pairing process is complete you can control. the fan speed, light functions on the app.

#### 2. Process to make the fan discoverable:

- A. Press and hold the "off" button for 5 seconds. The light will turn on and off to indicate discovery mode.

- B. Add a device per the instruction above.

