

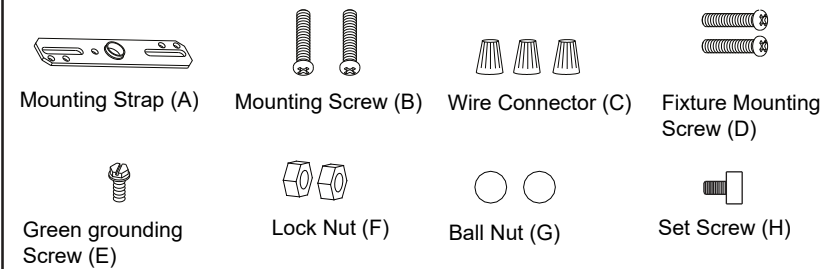
ASSEMBLY AND INSTALLATION INSTRUCTIONS

H0213 / H0214 / H0215 / H0216

WARNING: TO AVOID RISK OF ELECTRICAL SHOCK, BE SURE TO SHUT OFF POWER BEFORE INSTALLING OR SERVICING THIS FIXTURE.

NOTES: 1. Before installing, consult local electrical codes for wiring and grounding requirements.
2. READ AND SAVE THESE INSTRUCTIONS.

Hardware Package (included):



Installation Steps

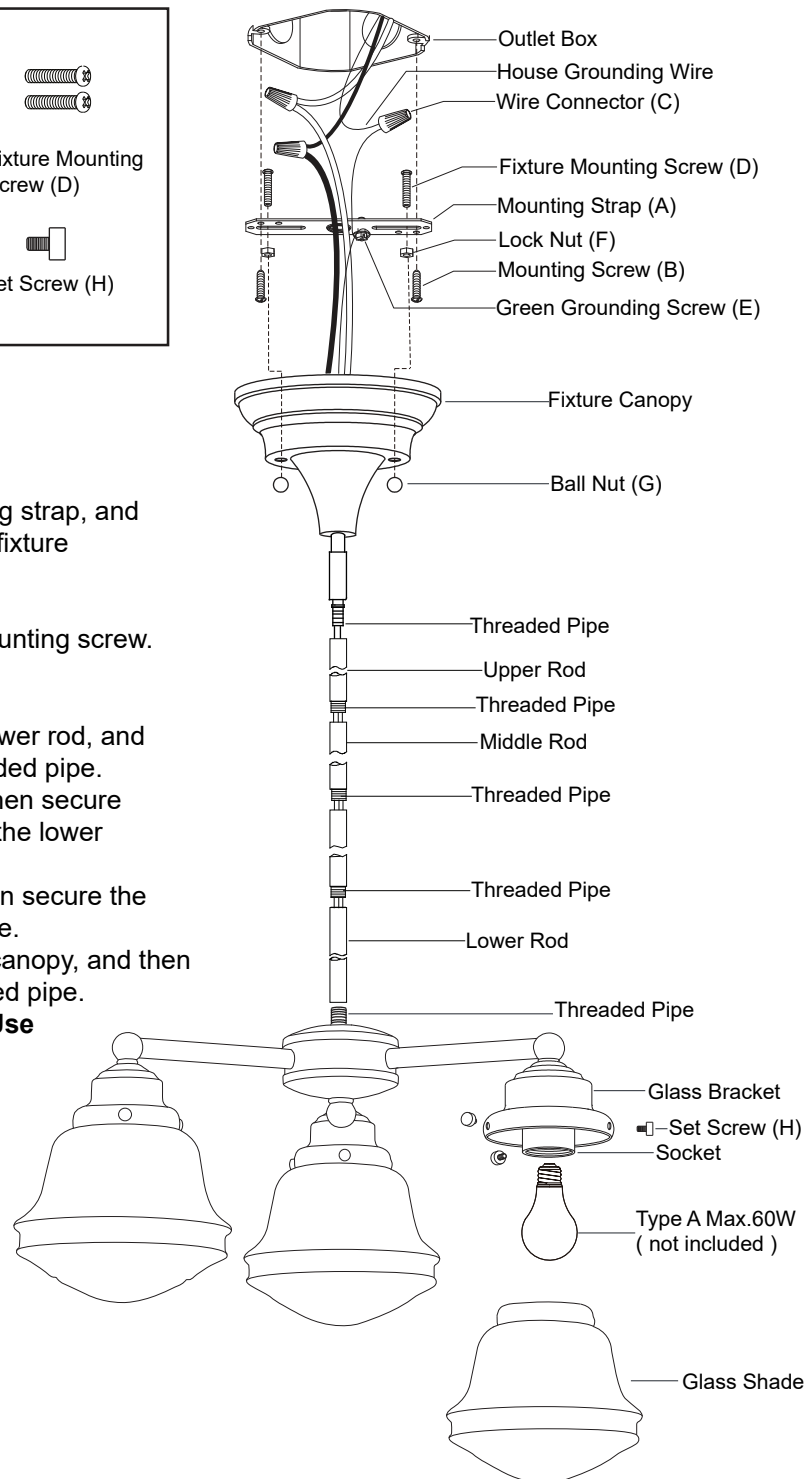
Turn off the power at fuse or circuit box.

1. Thread two fixture mounting screw through the mounting strap, and then secure with two lock nuts. Adjust the length of the fixture mounting screws if necessary.
2. Attach the mounting strap to the outlet box by using mounting screw.
3. Rod Connections
 - a. Thread the fixture wire from the fixture through the lower rod, and then secure the lower rod onto fixture using the threaded pipe.
 - b. Thread the fixture wire through the middle rod, and then secure the middle rod, and then secure the middle rod onto the lower rod using the threaded pipe.
 - c. Thread the fixture wire through the upper rod, and then secure the upper rod onto the middle rod using the threaded pipe.
 - d. Thread the fixture wire through the hook and fixture canopy, and then secure the hook onto the upper rod using the threaded pipe.

Note: Length adjustable from 32-1/4" to 86-1/4" . Use fewer rods if shorter length is desired.

4. Hang the hook to the loop of the fixture canopy.
5. Pull out the outlet wires and house grounding wire from the outlet box. Make wire connections using the wire connectors:
 - The smooth wire (marked) from the fixture to the black wire from the power source.
 - The ridged wire (unmarked) from the fixture to the white wire from the power source.
 - Attach the fixture grounding wire to the mounting strap with the green grounding screw. Then connect it to the house grounding wire with a wire connector.Carefully put wires back into the outlet box.

6. Attach the fixture canopy to the mounting strap by inserting the fixture mounting screw, and then secure it with two ball nuts.



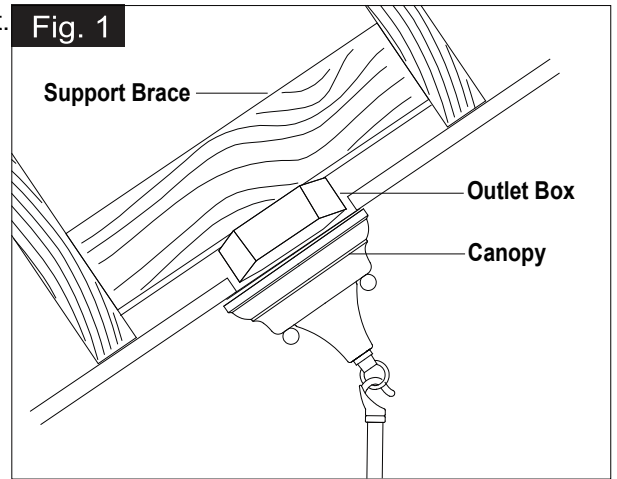
7. Install 3x60W Max medium base bulb (not included) to the socket.
Check relamping label at socket area or packaging for maximum allowed wattage.

8. Attach the glass shade to the glass bracket by threading set screws onto glass notches. (Do not over tighten.)

9. Angled mounting recommended for a vaulted or angled ceiling.
(See Fig.1)

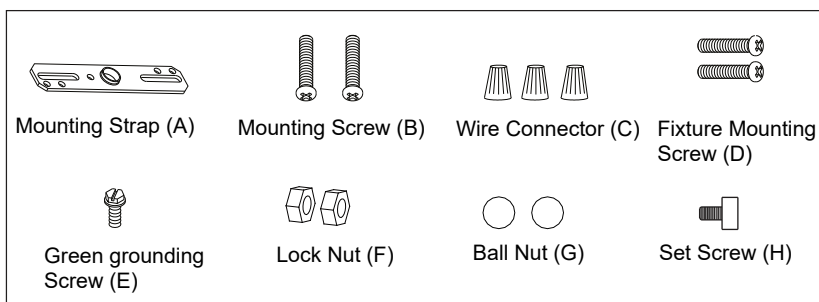
Turn on the power at fuse or circuit box.

Fig. 1

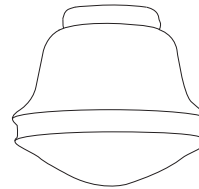


The following parts are available for re-order if damaged or missing.

Spare Parts List:



Mounting Hardware
6008MM for H0213 H0214
5773MM for H0215 H0216



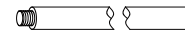
Glass Shade
9681CS for H0213 H0215
9680MI for H0214 H0216



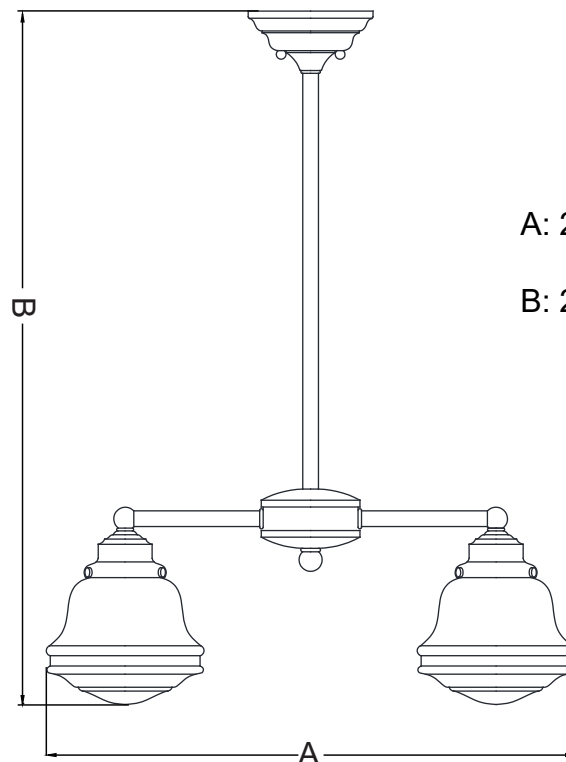
12" Rod
3052RD FOR H0215 H0216
4644RR FOR H0213 H0214



6" Rod
3051RD FOR H0215 H0216
4645RR FOR H0213 H0214



3" Rod
3050RD FOR H0215 H0216
4646RR FOR H0213 H0214



A: 21-1/4"

B: 27-3/4"